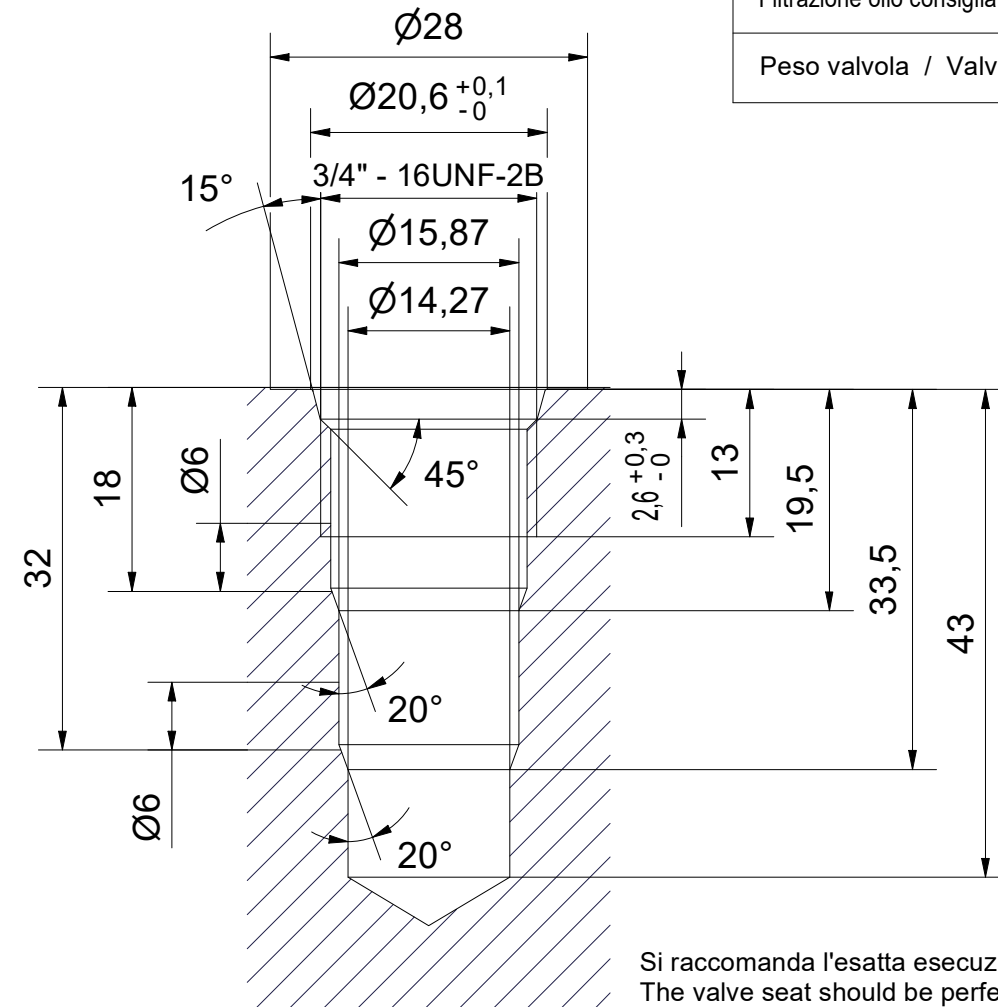
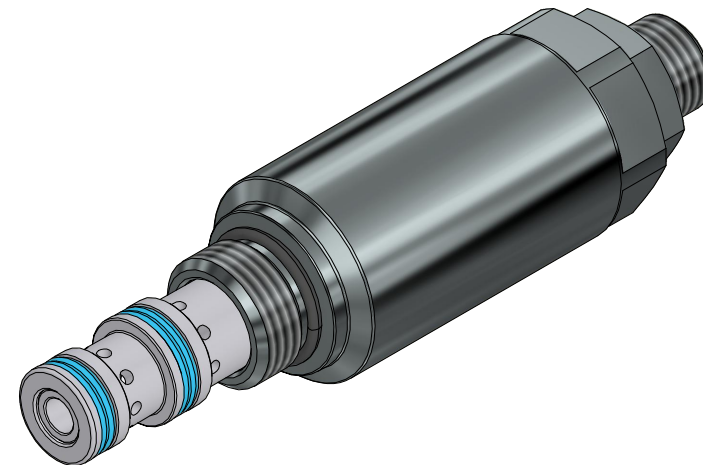
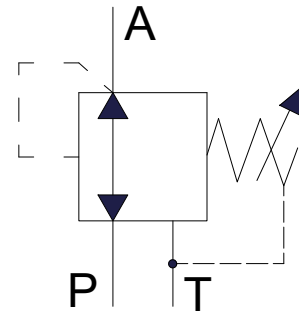
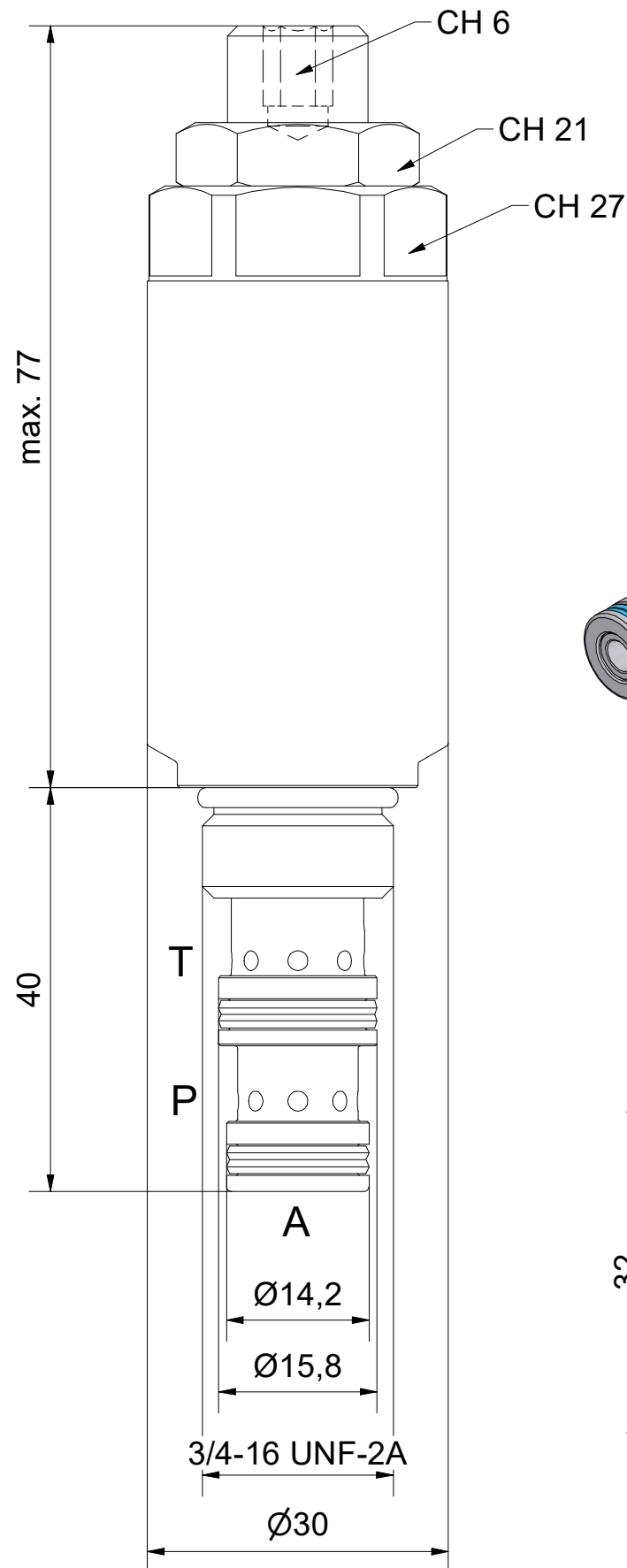


**Valvola riduttrice di pressione a spool, azione diretta**  
**Pressure reducing/relieving valve, spool type and direct acting**

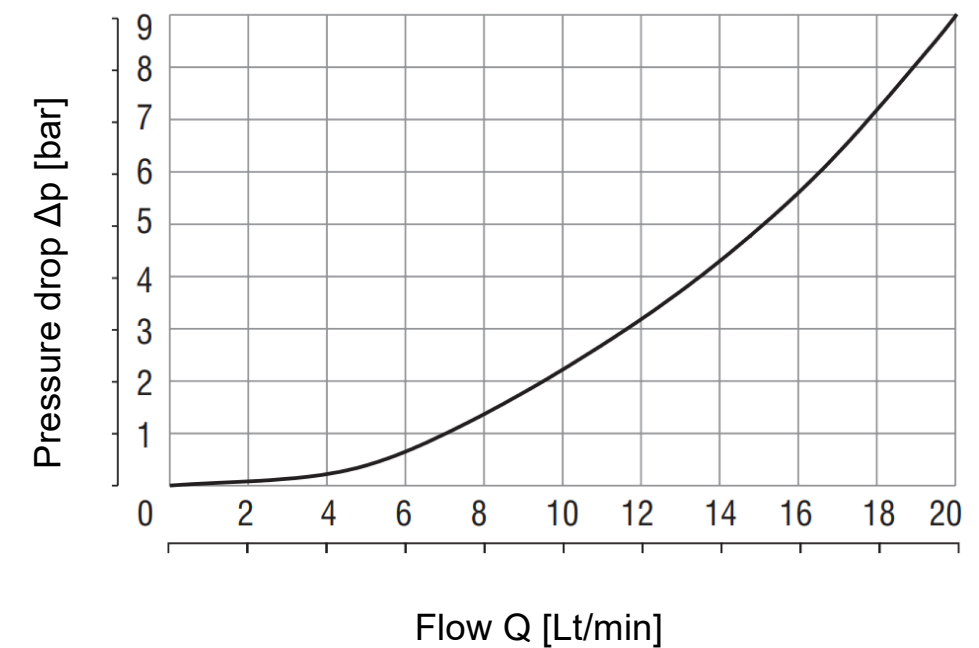


Valvole idrauliche e componenti integrati  
 Hydraulic valves and integrated components  
 Calvenzano (Bg) - ITALY



Si raccomanda l'esatta esecuzione della sede  
 The valve seat should be perfectly tooled

Codice serie Series code	Descrizione valvola Valve description	Attacchi Port size	Scala Scale	Data Date
<b>002.902</b>	VRP-C-S08	Cavità Cavity	CE-148-N (3/4-16 UNF)	17/03/2022
Dati tecnici Technical data				
Portata max / Max flow-rate		20 Lt/min		
Pressione max di lavoro / Max working pressure		350 bar		
Codice ordinazione / Ordering code	Codice Code	<b>002.902.AX0</b>	<b>002.902.BX0</b>	<b>002.902.CX0</b>
Pressione max ingresso (porta P) / Max inlet pressure (port P)	bar	50	150	250
Campo di pressione ridotta / Reduced pressure range (Q = 5 Lt/min)	bar	10 ÷ 25	20 ÷ 65	50 ÷ 160
Max contropressione (porta T) / Max back pressure (port T)	200 bar			
Temp. olio consigliata / Recommended oil temp.	-30 / +80 °C			
Temp. ambiente consigliata / Recommended room temp.	-30 / +50 °C			
Filtrazione olio consigliata / Recommended oil cleanliness	9 NAS-1638			
Peso valvola / Valve weight	0,312 Kg			



Approvato da / Approved by

Data / Date

Questo documento non può essere riprodotto, distribuito o divulgato a terzi senza autorizzazione.  
 This document may not be reproduced, distributed or disclosed to third parties without authorization.